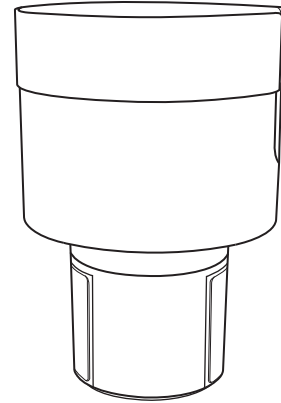




**SEVEN**  
**SPARTA**  
UNIQUENESS  
PERFECTION

Design is in the details



## ***QUICK INSTALL GUIDE***

### **CAR CUP HOLDER & EXPANDER**

Holds cups/bottles of diameter 3.4"-3.8"



# EASY INSTALLATION



**RUBBER COASTER**  
To help eliminate ratting noise



**U-SHAPE GROOVE HOLDER**  
To fit for mugs or bottles with a handle



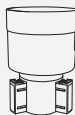
**BASE**



**SCREWDRIVER + SCREWS**



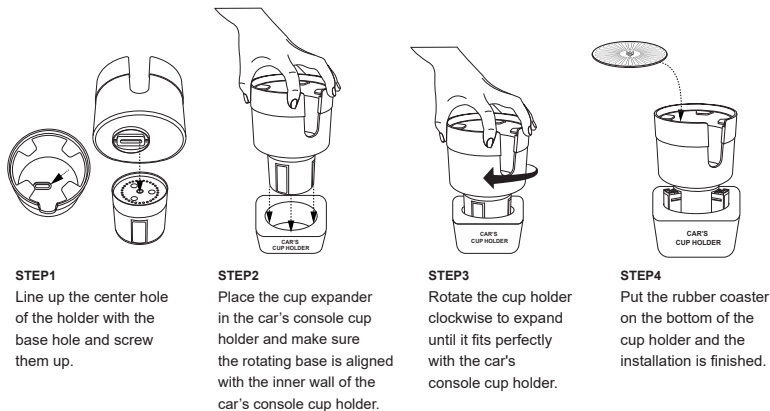
**RUBBER TABS**  
To help stabilize the cup



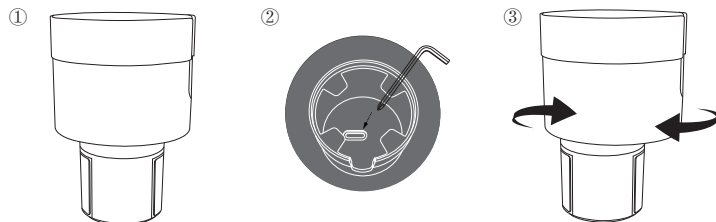
**CUP HOLDER**  
To hold cups/bottles of diameter 3.4"-3.8"



**EXPANDABLE BASE**  
To fit for diameter 2.5-3.75"  
center console cup holder



## UPGRADED DISPLACEMENT FUNCTION



Tip: Please adjust the position of the cup holder according to the actual situation of your vehicle. If you need to use two different positions at the same time, please install the first cup holder as shown in picture ③, and then install the second cup holder in the position shown in picture ①.