

Thank you for choosing TYMO CURLPRO Automatic Curling Iron. Please read this user manual carefully before use.

IMPORTANT SAFETY INSTRUCTIONS

When using electrical appliances, especially when children are present, basic safety precautions should always be followed, including the following:

READ ALL INSTRUCTIONS BEFORE USING KEEP AWAY FROM WATER

DANGER – As with most electrical appliances, electrical parts are electrically live even when the switch is off. To reduce the risk of death by electric shock:

1. Always "unplug it" immediately after using.
 2. Do not use while bathing.
 3. Do not place or store appliance where it can fall or be pulled into a tub or sink.
 4. Do not place in or drop into water or other liquid.
 5. If an appliance falls into water, "unplug it" immediately. Do not reach into the water.
- WARNING** – To reduce the risk of burns, electrocution, fire, or injury to persons:
6. An appliance should never be left unattended when plugged in.
 7. Close supervision is necessary when this appliance is used by, on, or near children or individuals with certain disabilities.
 8. Use this appliance only for its intended use as described in this manual. Do not use attachments not recommended by the manufacturer.
 9. Never operate this appliance if it has a damaged cord or plug, if it is not working properly, or if it has been dropped, damaged, or dropped into water. Return the appliance to a service center for examination and repair.
 10. Keep the cord away from heated surfaces. Do not wrap the cord around the appliance.
 11. Never block the air openings of the appliance or place it on a soft surface, such as a bed or couch, where the air openings may

12. Never use while sleeping.
13. Never drop or insert any object into any opening or hose.
14. Do not use outdoors or operate where aerosol (spray) products are being used or where oxygen is being administered.
15. Connect this appliance to a properly grounded outlet only. See Grounding Instructions.
16. Do not use an extension cord with this appliance.
17. Do not touch the posts that hold the curlers. They are hot.
18. This curling iron and clip are hot when in use. Do not let eyes and bare skin touch heated surfaces.
19. Do not place the heated curling iron directly on any surface while it is hot or plugged in. Use the stand provided.
20. This appliance is not intended for use by persons (including children) with reduced physical, sensory or mental capabilities, or lack of experience and knowledge, unless they have been given supervision or instruction concerning use of the appliance by a person responsible for their safety.
21. Children should be supervised to ensure that they do not play with the appliance.
22. If the supply cord is damaged, it must be replaced by the manufacturer, its service agent or similarly qualified persons in order to avoid a hazard.
23. When the appliance is used in a bathroom, unplug it after use since the proximity of water presents a hazard even when the appliance is switched off.
24. For additional protection, the installation of a residual current device (RCD) having a rated residual operating current not exceeding 30 mA is advisable in the electrical circuit supplying the bathroom. Ask your installer for advice.
25. **WARNING** Do not use this appliance near bathtubs, showers, basins or other vessels containing water.



26. Do not use this device in a bathtub, shower, or water-filled reservoir.
27. Burn hazard. Keep appliance out of reach from young children, particularly during use and cool down.
28. When the appliance is connected to the power supply, never leave it unattended.
29. Always place the appliance with the stand, if any, on a heat-resistant, stable flat surface.
30. Warning: Be careful about burns because this device is high temperature.

31. Do not allow to be used as a toy. Close attention is necessary when used by or near children. Children should be supervised to ensure that they do not play with the appliance.
32. Do not use an extension cord with this appliance.
33. This appliance has a non-self resetting thermal cut out safety device to prevent overheating.
34. Do not use the appliance for any other purpose than straightening hair.
35. Do not handle any part of the plug or appliance with wet hands.
36. Do not use any lubricants, cleaning agents, polishes, or air fresheners on any part of the appliance.
37. Contact the TYMO Customer Services Team when a service or repair is required. Do not disassemble the appliance as incorrect reassembly may result in an electric shock or fire.
38. When the appliance has been unpacked, check it if it has transport damage and ensure that all parts have been delivered. If parts are missing or the appliance has been damaged, please email the TYMO Customer Services Team.
39. If the appliance does not work, or is not working properly, please email the TYMO Customer Services Team. DO NOT attempt to repair the appliance. Repair work by the unqualified persons can cause serious risk to the user and will avoid the warranty.
40. -The symbol indicates Ac voltage.
41. The symbol indicates Class II equipment.

RECYCLING

This product bears the selective electrical and electronic equipment (WEEE). This means that this product must be handled pursuant to European directive 2012/19/EU to be recycled or dismantled to minimize its impact on the environment. User has the choice to give his product to a competent recycling organization or to the retailer when he buys a new electrical or electronic equipment. This product can be used across EU member states.

SAVE THESE INSTRUCTIONS

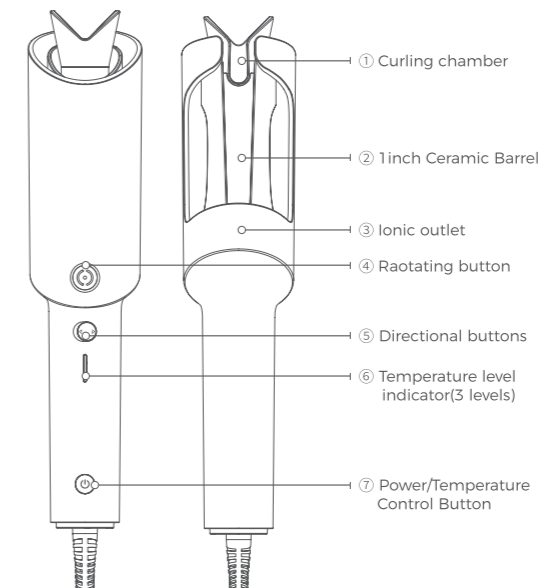
SPECIFICATIONS

Product Description: Automatic Curling Iron
Model NO.: HC503/HC503B/HC503BF/HC503P/HC503PT/HC503W/HC503G/HC503N
Size of Curling barrel: 1 inch
Input: 100-240V- 50/60Hz
Power: 32W
Heating Method: PTC
Heating Temperature: 320°F-365°F-410°F (160°C-185°C-210°C)

PACKAGING LIST

Packaging List	Quantity
Automatic Curling Iron	1

PRODUCT OVERVIEW



tymobeauty.com



Instagram



TikTok

HOW TO USE

Basic Operations

1. **Power On:** Press and hold the power button for 2 seconds to turn on. The device will initiate at a default temperature of 365° F (185°C) .

2. **Temperature Setting:** Press the Power/Temperature Control Button to select the appropriate temperature level.

The bargraph display indicates which settings you are using. Each short press of the power/temperature control button increases the temperature by one level. After reaching the highest level, pressing it again will cycle back to the lowest setting.



long press for 2 seconds to turn ON/OFF



short press to temperature control



320°F (160°C)



365°F (185°C)



410°F (210°C)

The recommended temperature levels for different hair types are as follows:

320°F (160°C): For bleached, damaged, or fine hair.

365°F (185°C): For slightly fine to normal hair.

410°F (210°C): For thick and coarse hair.

3. **Power Off:** Long-press the power button for 2 seconds to turn off the device. All indicators will extinguish, and the heating element will cease operation.

Operating Steps:

1. Press and hold the power button for 2 seconds to power on the device.

2. After powering on the product, if the product is not in use, it will automatically shut down after 10 minutes.

3. When using the product, make sure that the hair is dry, otherwise it may not achieve the desired curling effect.

4. The negative ion function is always enabled by default when the product is in operation.

TYMO CURLPRO Styling Guide:

1. **Preparation:** Wash and dry the hair thoroughly. Detangle all strands.

2. **Settings:** Select the desired temperature and curl direction based on the provided diagram.

3. **Placement:** Hold the device in a vertical orientation with the control buttons facing toward the head and the curl chamber positioned away from the head.

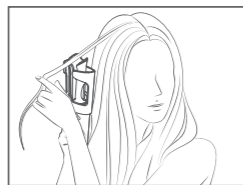
4. **Sectioning:** Section a 3/4-inch to 1-inch strand of hair section each time to prevent tangling.

5. **Insertion:** Place the designated hair section at a 90-degree angle into the curl chamber.

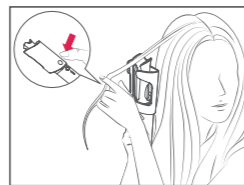
6. **Curling Process:** Depress the rotating button. The hair will be automatically drawn into the curl chamber.

7. **Timing:** Upon hearing the 8-second auditory signal, remove the device gently for fine hair. For coarser hair, extend the time by an additional 3-5 seconds.

8. **Repetition:** Repeat steps 2 through 7 as needed.



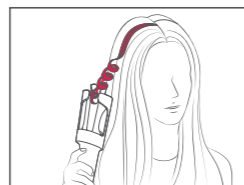
Place 3/4 inch to 1 inch section of hair into the slot



Press the rotate button. The hair will be automatically drawn into the curl chamber.



When hair is fully curled, you can press a button or wait for it to stop automatically.



Upon hearing the 8-second auditory signal, remove the device gently for fine hair. For coarser hair, extend the time by an additional 3-5 seconds.

* Recommended curling time for different hair lengths:

Shoulder Length 8s-10s

Chest Length 11s-13s

Below Chest Length 14s-16s

Tips

> Adjust the heating time based on your hair length, but be cautious not to leave it on for too long to prevent hair damage.

> Use smaller hair sections to prevent tangles.

> If the hair becomes tangled, the TYMO CURLPRO will automatically stop rotating. To address this, press the power button to deactivate the device. Carefully remove the tangled strands by releasing them section by section until all hair is freed.

500 Million Negative Ions

Releases 500 million negative ions to reduce static and frizz in the hair.

Anti-tangle Mechanism

Intelligently detects tangles, promptly reverses to prevent hair pulling.

Built-in Timer

Auto beeps in 8 seconds to prevent excessive heat exposure.

10-Minute Auto Shut-off

Automatically shuts off if the device is idle for 10 minutes to add safety.

T-GLOSS Ceramic Coating

In contrast to ordinary coatings, T-GLOSS ceramic coating enhances the moisture and shine of hair.

Anti-scald Design

Prevents burns during the curling process, making it easy for beginners to use.

Intelligent Temperature Monitoring

NTC sensors monitor temperature 1,000 times per second, preventing heat damage.

CAUTION

During the first use of the appliance, a slight burned smell or mist may be produced due to remaining test material on the metal parts of the appliance. This is a normal occurrence and will disappear in a few seconds. If the temperature is set too high, it may cause hair burning! Choose the appropriate temperature based on your hair condition to avoid drying or scalding.

MAINTENANCE INSTRUCTIONS

This appliance is virtually maintenance-free and contains no serviceable parts. Ensure that the heated surfaces are clean and free of dust, dirt, and hair spray. If cleaning is required, turn off the appliance and use a cloth to wipe the exterior. In the event of a malfunction, do not attempt to repair the appliance as it does not have user-serviceable parts.

STORAGE

Allow appliance to cool and store out of reach of children in a safe, dry location. Never wrap the USB cord around the appliance because this will cause the cord to wear prematurely and break. Handle cord carefully for longer life and avoid jerking, bending sharply, twisting, or straining cord, especially at plug connections. Please store your product at an ambient temperature range of 39°F - 104°F (4°C - 40°C) when it is not in use.

FCC STATEMENT

This device complies with Part 15 of the FCC Rules. Operation is subject to the following two conditions:

1. This device may not cause harmful interference.
2. This device must accept any interference received, including interference that may cause undesired operation.

WARNING

Changes or modifications to this unit not expressly approved by the party responsible for compliance could void the user's authority to operate the equipment.

NOTE

This equipment has been tested and found to comply with the limits for a Class B digital device, pursuant to Part 15 of the FCC Rules. These limits are designed to provide reasonable protection against harmful interference in a residential installation. This equipment generates, uses and can radiate radio frequency energy and, if not installed and used in accordance with the instructions, may cause harmful interference to radio communications. However, there is no guarantee that interference will not occur in a particular installation. If this equipment does cause harmful interference to radio or television reception, which can be determined by turning the equipment off and on, the user is encouraged to try to correct the interference by one or more of the following measures:

- Reorient or relocate the receiving antenna.
- Increase the separation between the equipment and receiver.
- Connect the equipment into an outlet on a circuit different from that to which the receiver is connected.
- Consult the dealer or an experienced radio/TV technician for help.

WARRANTY

The product warranty is governed by regulations in force and applied upon showing the original legible purchase receipt complete of all its parts. For support service under warranty, please take the original purchase receipt to the store where the product was purchased.

Membership Registration
- Go Online NOW!



SCAN TO JOIN