

- **Low Cost**
- **7-Bit Resolution**
- **Monotonicity Over Entire A/D Conversion Range**
- **Ratiometric Conversion**
- **Conversion Speed . . . Approximately 1 ms**
- **Single-Supply Operation . . . Either Unregulated 8-V to 18-V (V_{CC2} Input) or Regulated 3.5-V to 6-V (V_{CC1} Input)**
- **I²L Technology**
- **Power Consumption at 5 V . . . 25 mW Typ**
- **Regulated 5.5-V Output (≤ 1 mA)**

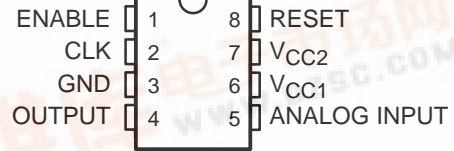
description

The TL507 is a low-cost single-slope analog-to-digital converter designed to convert analog input voltages between $0.25 V_{CC1}$ and $0.75 V_{CC1}$ into a pulse-width-modulated output code. The device contains a 7-bit synchronous counter, a binary weighted resistor ladder network, an operational amplifier, two comparators, a buffer amplifier, an internal regulator, and necessary logic circuitry. Integrated-injection logic (I²L) technology makes it possible to offer this complex circuit at low cost in a small dual-in-line 8-pin package.

In continuous operation, conversion speeds of up to 1000 conversions per second are possible. The TL507 requires external signals for CLK, RESET, and ENABLE. Versatility and simplicity of operation, coupled with low cost, makes this converter especially useful for a wide variety of applications.

The TL507C is characterized for operation from 0°C to 70°C, and the TL507I is characterized for operation from -40°C to 85°C.

P PACKAGE
(TOP VIEW)



FUNCTION TABLE

ANALOG INPUT CONDITION	ENABLE	OUTPUT
X	L†	H
$V_I < 200$ mV	H	L
$V_{ramp} > V_I > 200$ mV	H	H
$V_I > V_{ramp}$	H	L

† Low level on enable also inhibits the reset function. H = high level, L = low level, X = irrelevant

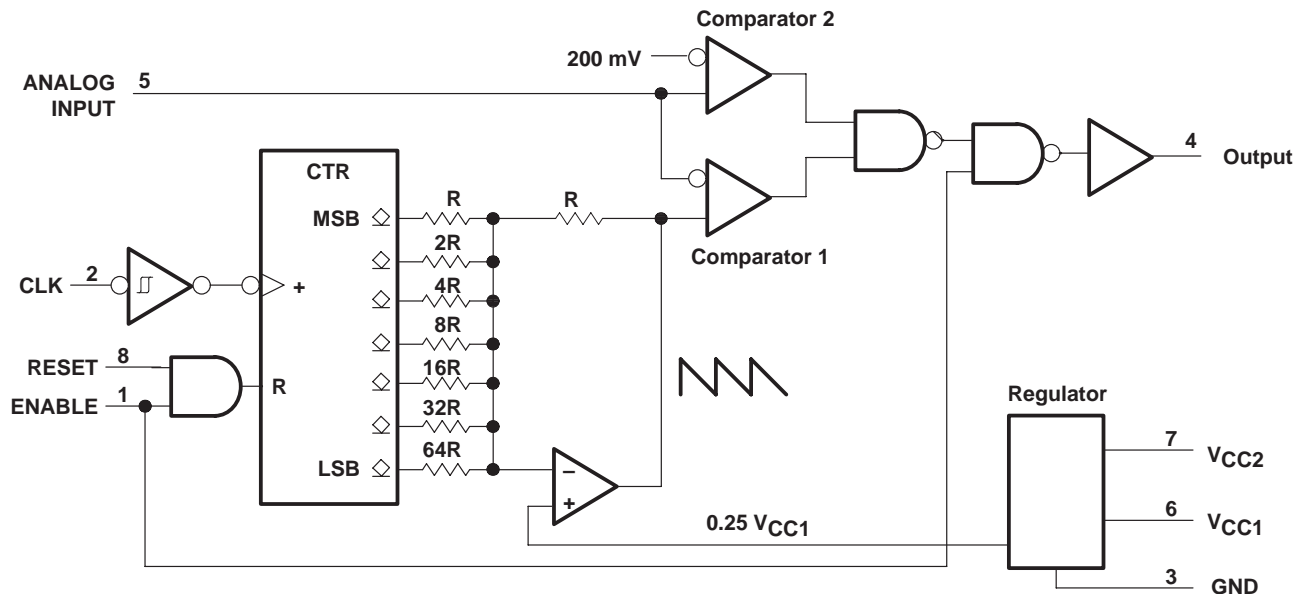
A high level on RESET clears the counter to zero, which sets the internal ramp to $0.75 V_{CC}$. Internal pulldown resistors keep RESET and ENABLE low when not connected.



TL507C, TL507I ANALOG-TO-DIGITAL CONVERTER

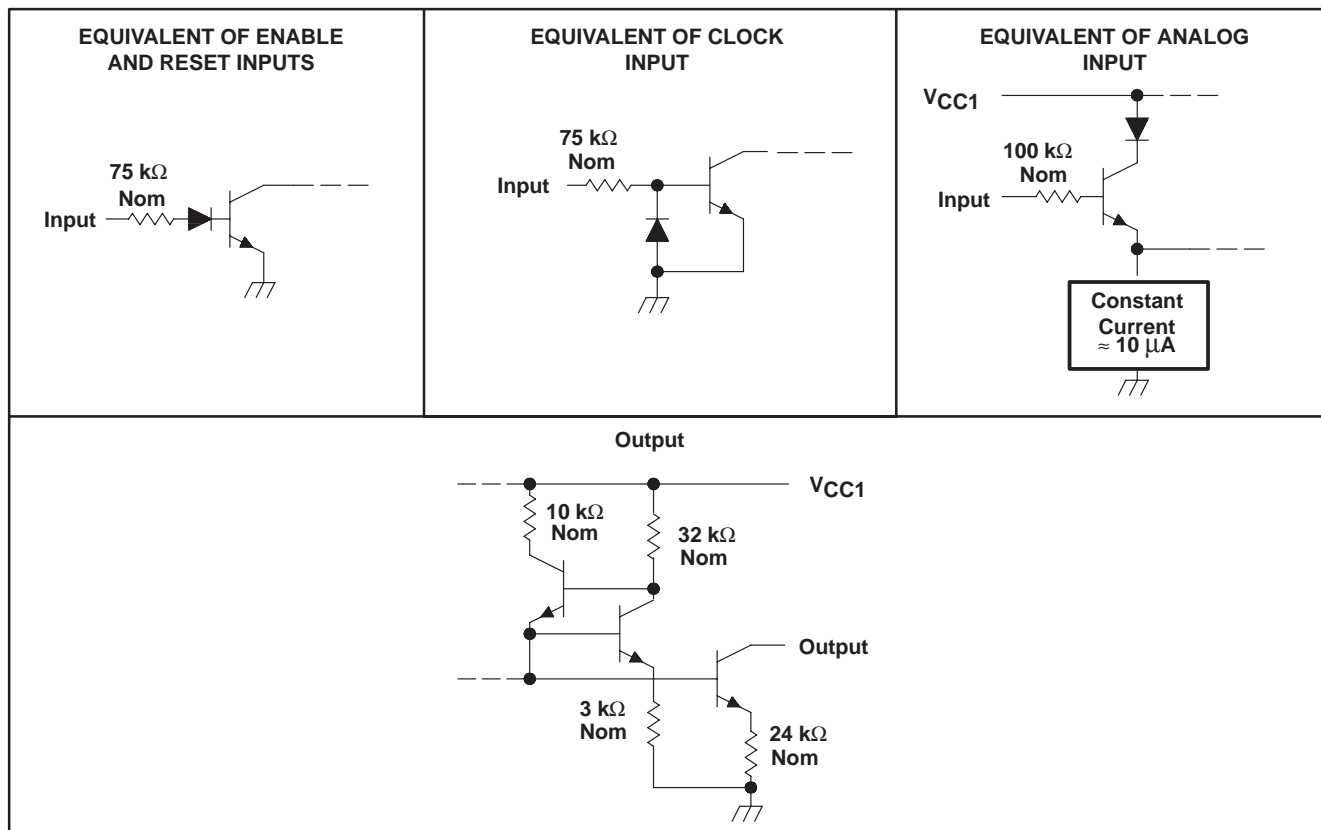
SLAS041 – OCTOBER 1979 – REVISED OCTOBER 1988

functional block diagram (positive logic)



◇ indicates an n-p-n open-collector output.

schematics of inputs and outputs



TL507C, TL507I ANALOG-TO-DIGITAL CONVERTER

SLAS041 – OCTOBER 1979 – REVISED OCTOBER 1988

absolute maximum ratings over operating free-air temperature range (unless otherwise noted)

Supply voltage, V_{CC1} (see Note 1)	6.5 V
Supply voltage, V_{CC2}	20 V
Input voltage at analog input	6.5 V
Input voltage at ENABLE, CLK, and RESET	20 V
On-state output voltage	6 V
Off-state output voltage	20 V
Continuous total dissipation at (or below) 25°C free-air temperature (see Note 2)	1000 mW
Operating free-air temperature range: TL507C	0 to 70°C
TL507I	–40°C to 85°C
Storage temperature range	–65°C to 150°C
Lead temperature 1,6 mm (1/16 inch) from case for 10 seconds	260°C

- NOTES: 1. Voltage values are with respect to network ground terminal unless otherwise noted.
 2. For operation above 25°C free-air temperature, derate linearly to 520 mW at 85°C at the rate of 8.0 mW/°C.

recommended operating conditions

	MIN	NOM	MAX	UNIT
Supply voltage, V_{CC1}	3.5	5	6	V
Supply voltage, V_{CC2}	8	15	18	V
Input voltage at ANALOG INPUT	0		5.5	V
Input voltage at ENABLE, CLK, and RESET			±18	V
High-level input voltage, V_{IH} , RESET and ENABLE	2			V
Low-level input voltage, V_{IL} , RESET and ENABLE			0.8	V
On-state output voltage			5.5	V
Off-state output voltage			1.8	V
Clock frequency, f_{clock}	0	125	150	kHz

electrical characteristics over recommended operating free-air temperature range, $V_{CC1} = V_{CC2} = 5 V$ (unless otherwise noted)

regular section

PARAMETER		TEST CONDITIONS	MIN	TYP†	MAX	UNIT
V_{CC1}	Supply voltage (output)	$V_{CC2} = 10 V$ to 18 V, $I_{CC1} = 0$ to –1 mA	5	5.5	6	V
I_{CC1}	Supply current	$V_{CC1} = 5 V$, V_{CC2} open		5	8	mA
I_{CC2}	Supply current	$V_{CC2} = 15 V$, V_{CC1} open		7	10	mA

inputs

PARAMETER		TEST CONDITIONS	MIN	TYP†	MAX	UNIT
V_{T+}	Positive-going threshold voltage‡	CLK			4.5	V
V_{T-}	Negative-going threshold voltage‡		0.4			V
V_{hys}	Hysteresis ($V_{T+} - V_{T-}$)		2	2.6	4	V
I_{IH}	High-level input current	RESET, ENABLE, and CLK				μA
I_{IL}	Low-level input current					
I_I	Analog input current					μA
		$V_I = 2.4 V$		17	35	
		$V_I = 18 V$	130	220	320	μA
		$V_I = 0$			±10	μA
		$V_I = 4 V$		10	300	nA

† All typical values are at $T_A = 25^\circ C$.

‡ These parameters are linear functions of V_{CC1} .

TL507C, TL507I

ANALOG-TO-DIGITAL CONVERTER

SLAS041 – OCTOBER 1979 – REVISED OCTOBER 1988

output section

PARAMETER		TEST CONDITIONS	MIN	TYP†	MAX	UNIT
I_{OH}	High-level output current	$V_{OH} = 18\text{ V}$		0.1	100	μA
I_{OL}	Low-level output current	$V_{OL} = 5.5\text{ V}$	5	10	15	mA
V_{OL}	Low-level output voltage	$I_{OL} = 1.6\text{ mA}$		80	400	mV

operating characteristics over recommended operating free-air temperature range, $V_{CC1} = V_{CC2} = 5.12\text{ V}$

PARAMETER		TEST CONDITIONS	MIN	TYP†	MAX	UNIT
Overall error					± 80	mV
Differential nonlinearity		See Figure 1			± 20	mV
Zero error‡		Binary count = 0			± 80	mV
Scale error		Binary count = 127			± 80	mV
Full scale input voltage‡		Binary count = 127	3.74	3.82	3.9	V
Propagation delay time from RESET or ENABLE				2		μs

† All typical values are at $T_A = 25^\circ\text{C}$.

‡ These parameters are linear functions of V_{CC1} .

definitions

zero error

The absolute value of the difference between the actual analog voltage at the 01H-to-00H transition and the ideal analog voltage at that transition.

overall error

The magnitude of the deviation from a straight line between the endpoints of the transfer function.

differential nonlinearity

The maximum deviation of an analog-value change associated with a 1-bit code change (1 clock pulse) from its theoretical value of 1 LSB.

PARAMETER MEASUREMENT INFORMATION

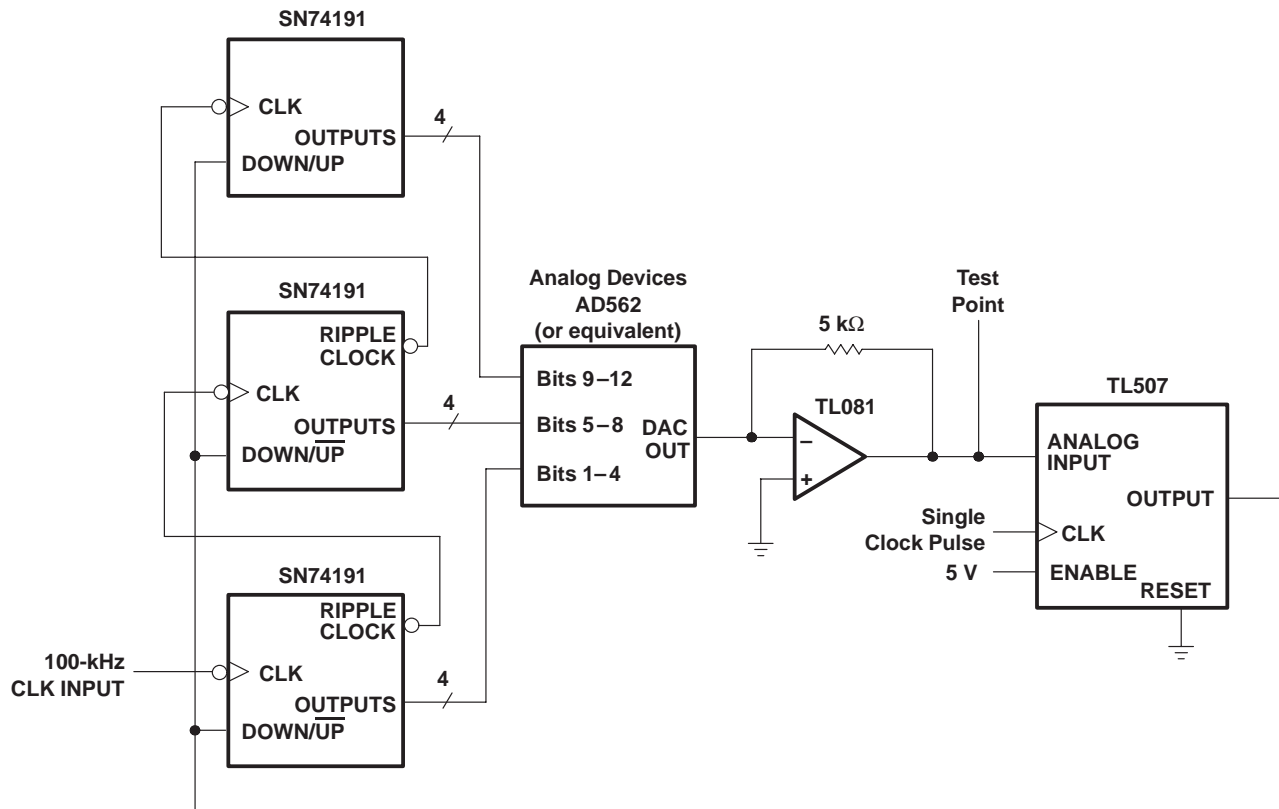


Figure 1. Monotonicity and Nonlinearity Test Circuit

TL507C, TL507I ANALOG-TO-DIGITAL CONVERTER

SLAS041 – OCTOBER 1979 – REVISED OCTOBER 1988

PRINCIPLES OF OPERATION

The TL507 is a single-slope analog-to-digital converter. All single-slope converters are basically voltage-to-time or current-to-time converters. A study of the functional block diagram shows the versatility of the TL507.

An external clock signal is applied through a buffer to a negative-edge-triggered synchronous counter. Binary-weighted resistors from the counter are connected to an operational amplifier used as an adder. The operational amplifier generates a signal that ramps from $0.75 \cdot V_{CC1}$ down to $0.25 \cdot V_{CC1}$. Comparator 1 compares the ramp signal to the analog input signal. Comparator 2 functions as a fault defector. With the analog input voltage in the range $0.25 \cdot V_{CC1}$ to $0.75 \cdot V_{CC1}$, the duty cycle of the output signal is determined by the unknown analog input, as shown in Figure 2 and the Function Table.

For illustration, assume $V_{CC1} = 5.12 \text{ V}$,

$$0.25 \cdot V_{CC1} = 1.28 \text{ V}$$

$$1 \text{ binary count} = \frac{(0.75 - 0.25) V_{CC1}}{128} = 20 \text{ mV}$$

$$0.75 \cdot V_{CC1} - 1 \text{ count} = 3.82 \text{ V}$$

The output is an open-collector n-p-n transistor capable of withstanding up to 18 V in the off state. The output is current limited to the 8- to 12-mA range; however, care must be taken to ensure that the output does not exceed 5.5 V in the on state.

The voltage regulator section allows operation from either an unregulated 8- to 18-V V_{CC2} source or a regulated 3.5- to 6-V V_{CC1} source. Regardless of which external power source is used, the internal circuitry operates at V_{CC1} . When operating from a V_{CC1} source, V_{CC2} may be connected to V_{CC1} or left open. When operating from a V_{CC2} source, V_{CC1} can be used as a reference voltage output.

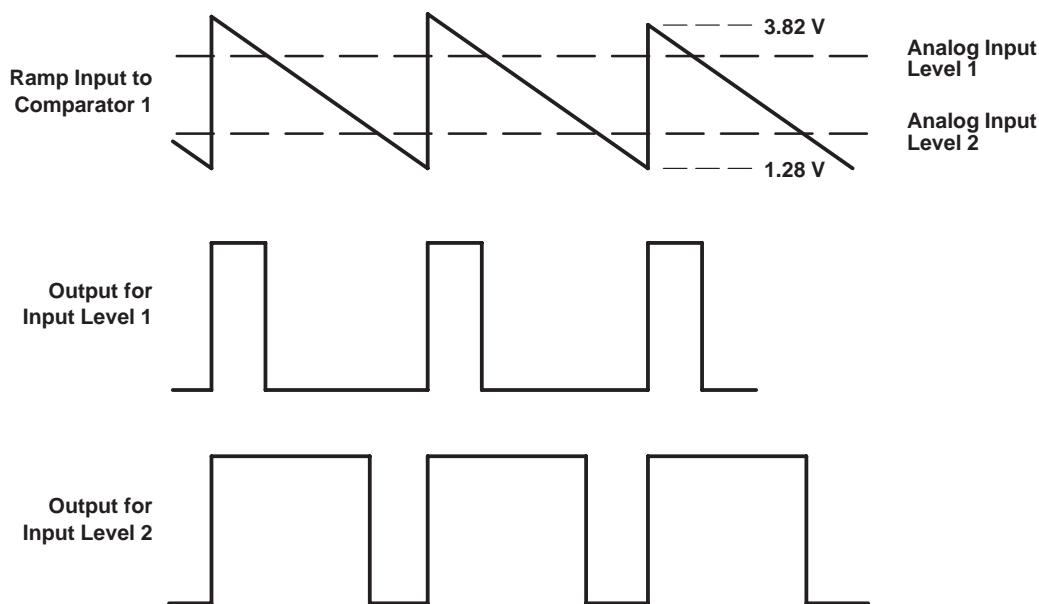


Figure 2

IMPORTANT NOTICE

Texas Instruments and its subsidiaries (TI) reserve the right to make changes to their products or to discontinue any product or service without notice, and advise customers to obtain the latest version of relevant information to verify, before placing orders, that information being relied on is current and complete. All products are sold subject to the terms and conditions of sale supplied at the time of order acknowledgement, including those pertaining to warranty, patent infringement, and limitation of liability.

TI warrants performance of its semiconductor products to the specifications applicable at the time of sale in accordance with TI's standard warranty. Testing and other quality control techniques are utilized to the extent TI deems necessary to support this warranty. Specific testing of all parameters of each device is not necessarily performed, except those mandated by government requirements.

CERTAIN APPLICATIONS USING SEMICONDUCTOR PRODUCTS MAY INVOLVE POTENTIAL RISKS OF DEATH, PERSONAL INJURY, OR SEVERE PROPERTY OR ENVIRONMENTAL DAMAGE ("CRITICAL APPLICATIONS"). TI SEMICONDUCTOR PRODUCTS ARE NOT DESIGNED, AUTHORIZED, OR WARRANTED TO BE SUITABLE FOR USE IN LIFE-SUPPORT DEVICES OR SYSTEMS OR OTHER CRITICAL APPLICATIONS. INCLUSION OF TI PRODUCTS IN SUCH APPLICATIONS IS UNDERSTOOD TO BE FULLY AT THE CUSTOMER'S RISK.

In order to minimize risks associated with the customer's applications, adequate design and operating safeguards must be provided by the customer to minimize inherent or procedural hazards.

TI assumes no liability for applications assistance or customer product design. TI does not warrant or represent that any license, either express or implied, is granted under any patent right, copyright, mask work right, or other intellectual property right of TI covering or relating to any combination, machine, or process in which such semiconductor products or services might be or are used. TI's publication of information regarding any third party's products or services does not constitute TI's approval, warranty or endorsement thereof.