

THE SIMPLE LINEAR CHANNEL BUYER'S GUIDE

We have created this Linear Channel Buyer's Guide as a starting point for picking your linear channel, highlighting all the key features.

If you can't find exactly what you need, many of these channels offer bespoke options. Speak to our sales team.

Product Properties		Linear Drainage Options											
		NE	NEHD	NEF	RP	RE	SVF	SVFE	RPV	HC Hidden Channel	SL Supaslot Channel	TDN Threshold Channel	S4800
Load Class	A15	✓	✓	✓	✓	✓	✓	✓	✓	✓	✓	✓	✓
	B125	✓	✓	✓	✓	✓	✗	✗	✓	✓	✓	✗	✗
	C250	✗	✓	✓	✓	✓	✗	✗	✓	✗	✗	✗	✗
	D400	✗	✓*	✓*	✓*	✓*	✗	✗	✗	✗	✗	✗	✗
Floor Finish	Vinyl/Flexible sheet flooring	✗	✗	✗	✗	✗	✓	✓	✓	✗	✗	✗	✗
	Tile/ Paving	✓	✓	✓	✓	✓	✗	✗	✗	✓	✓	✓	✓
	Screed/ Concrete	✓	✓	✓	✓	✓	✗	✗	✗	✓	✓	✓	✓
	Resin	✓	✓	✓	✓	✓	✗	✗	✗	✓	✓	✓	✓
Floor Build-up below finish	Timber Deck	✗	✗	✓	✓	✗	✗	✓	✗	✓	✗	✗	✗
	Screed/ Concrete (No membrane)	✓	✓	✓	✓	✓	✓	✓	✓	✓	✓	✓	✓
	Screed/ Concrete (With membrane)	✓*	✓*	✓	✓	✓	✓	✓	✓	✓	✓	✓	✓
Suitable applications	Hygiene areas**	✓	✗	✗	✓	✓	✓	✓	✓	✓	✗	✗	

* These products can be adapted to meet the required criteria.

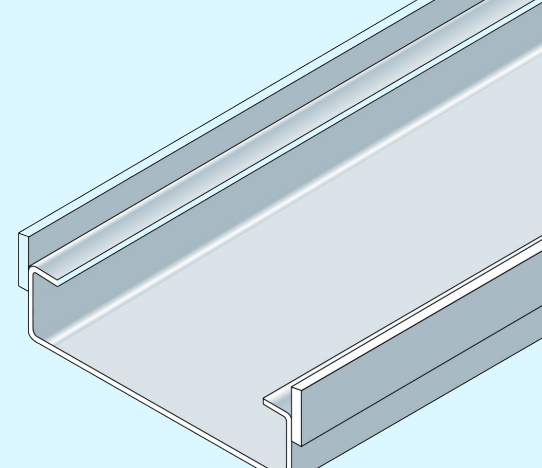
** Only in specific hygiene-related areas would these gratings be suitable. Our team can provide more information on request Contact: wadesales@alumascwms.co.uk

Linear Drainage offers stainless steel channels and a wide choice of grating designs. Channels are available in a range of profiles, shown and described below, generally with in-built fall towards the outlets. Side bars and folds are made so that the selected grating fits flush with the show edges. Load class refers to installation with a grating of the same or higher class in accordance with Wade installation guidelines.

Narrow Edge — NE

Narrow show edge (3mm wide). Suitable for most standard applications, provides a floor finish abutment face; can be produced as a curved channel with any perforated gratings.

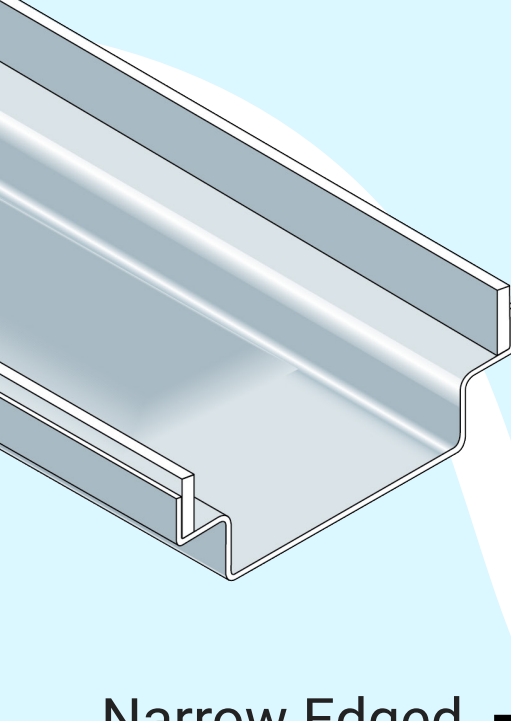
Load Class – B125



NEHD — Narrow Edge Heavy Duty

Narrow show edge (3mm wide). Not suitable for hygiene environments. Load class D400 is also available, with 5mm wide show edge – add suffix D400 to Spec.

Load Class – C250

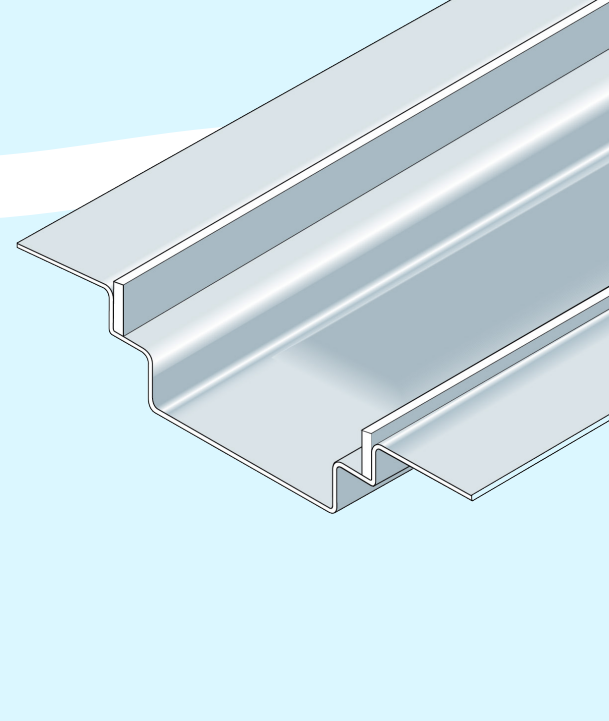


Narrow Edged Flange — NEF

Not suitable for hygiene environments. Load class A15 in timber deck. Narrow show edge (3mm wide) provides a floor finish abutment face. Extended flange enables dressing a membrane and/or fixing to a timber deck (Fixing holes are available on request).

When specifying/ordering please advise the required flange depth.

Load Class – C250

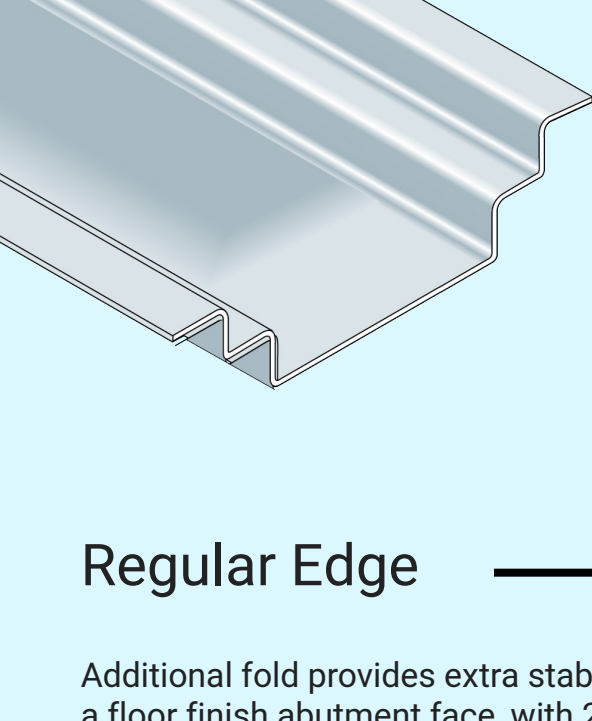


RP — Regular Profile

Suitable for most standard applications, with 10mm wide show flange.

Load Class – C250

Load class D400 also available (2mm channel thickness) – add suffix D400 to Spec.



Regular Edge — RE

Additional fold provides extra stability to channel edge and a floor finish abutment face, with 25mm wide show flange.

Load Class – C250

Load class D400 also available (2mm channel thickness) add suffix D400 to Spec. Code.

A support bar is recommended in C250 and D400 applications.

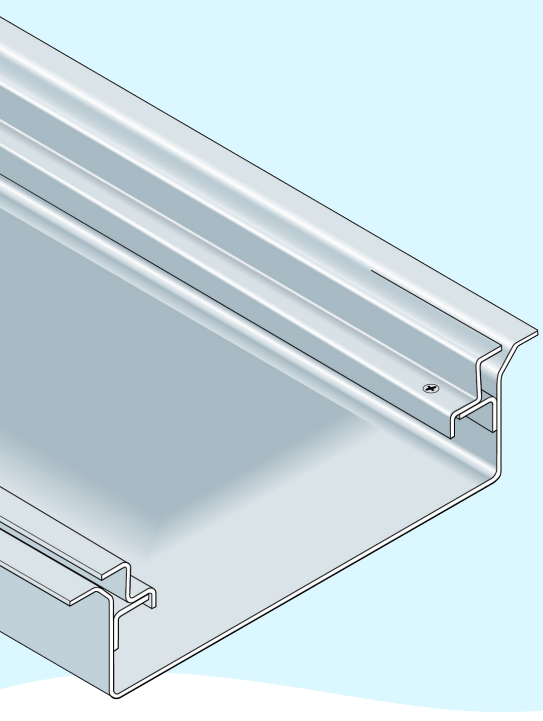


SVF — For use with vinyl & flexible sheet flooring

For use with vinyl and other flexible sheet material Stainless steel clamp ensures watertight connection, access to channel and outlet is easily achieved without disturbing the floor covering. Minimum grating width required = 80mm. For use with vinyl and other flexible sheet material. Has an extended flange with fixing holes, for use in timber deck.

Stainless steel clamp ensures watertight connection, access to channel and outlet is easily achieved without disturbing the floor covering, with 15mm wide show flange. Minimum grating width required = 80mm.

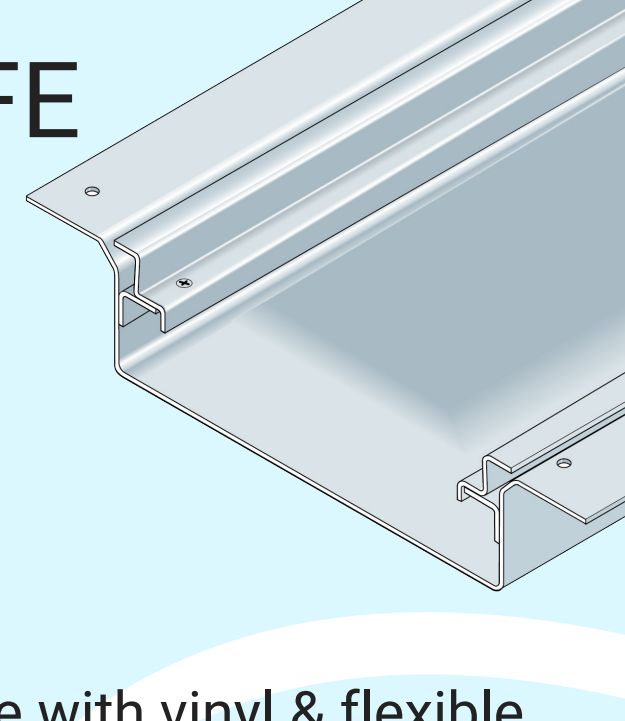
Load Class – A15



For use with vinyl & flexible sheet flooring — SVFE

Has an extended flange with fixing holes, for use in timber deck, with 15mm wide show flange.

Load Class – A15

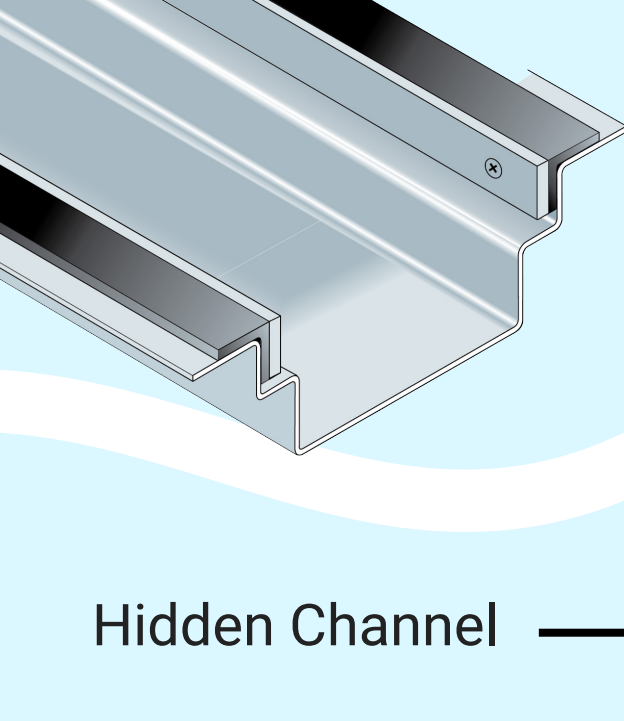


RPV — For use with vinyl & flexible sheet flooring – heavy duty

Profile RP is available with a factory fitted PVC angle edging strip to which sheet floor covering can be butt-welded at the time of installation; such channels are particularly suited to heavy duty applications. With 27mm wide show flange.

Note: suitable only for channels with grating of minimum 25mm depth.

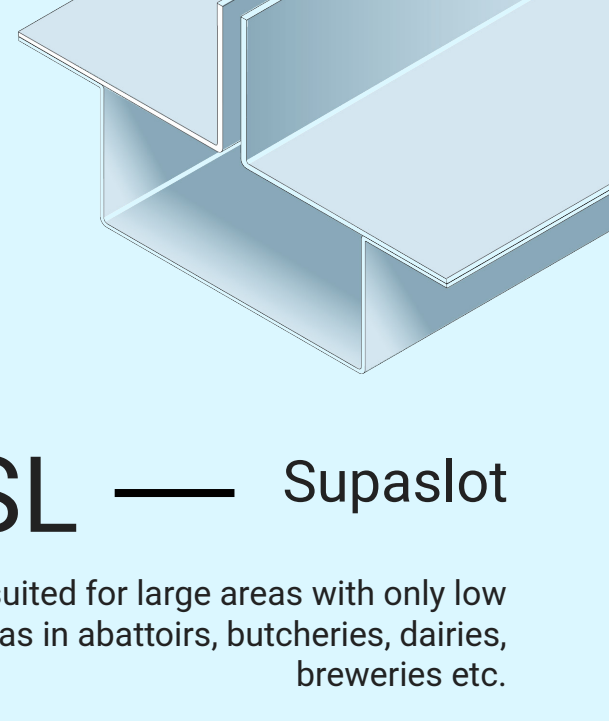
Load Class – C250



Hidden Channel — HC

Suited for draining large areas of screed, resin and other floor finishes, as well as block paving, hidden channel can be designed to accommodate a range of paving thicknesses and flow rate requirements. Available is a range of profiles, generally with in-built falls towards the outlet.

Alternatives: HC, HSC, HCE, HSCE

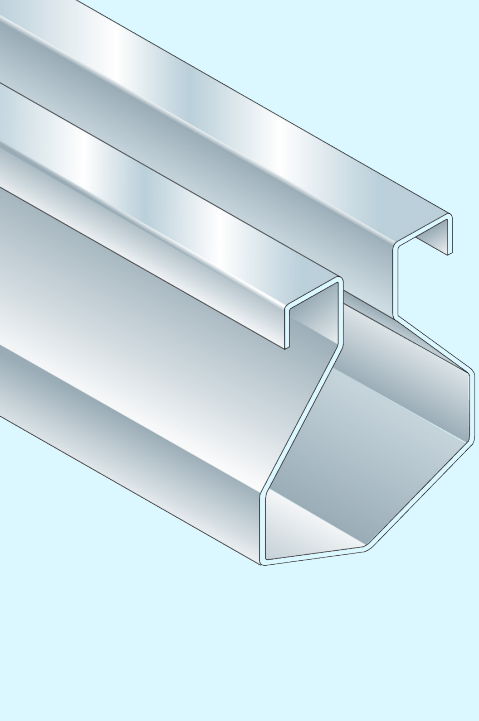


SL — Supaslot

Supaslot channels are suited for large areas with only low volumes of waste water such as in abattoirs, butcheries, dairies, breweries etc.

A popular choice between designated wet and dry zones, such as between dishwashing and cooking areas of a kitchen.

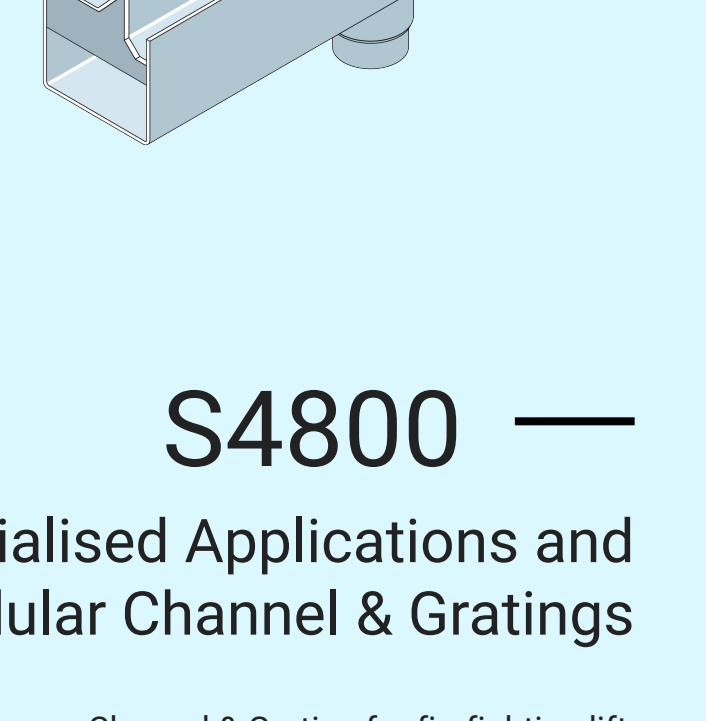
Available in three profile options, SL, SSL (with non-removable toe bar, 6mm slot width suitable for use in barefoot areas) & HL (Designed for use against a wall).



Hidden for threshold drainage — TND

Designed to help protect a building threshold from ingress / ponding of rainwater landing on an external door, the specially formed channel is installed, generally 10mm away from the door cill, this gap being the path for rainwater to flow into the hidden channel below.

The channel also has facility to receive run-off from a sub-cill and / or from the damp proof course / membrane that must be dressed into the channel.

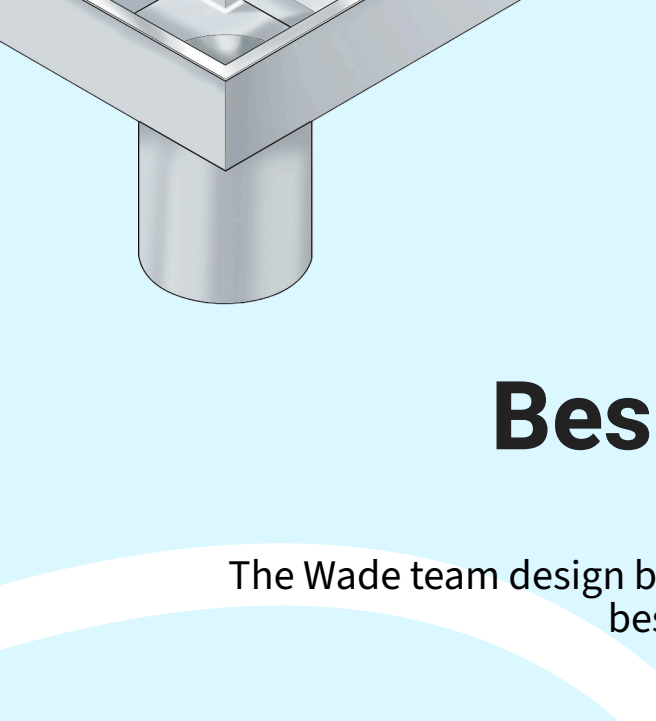


S4800 —

Specialised Applications and Modular Channel & Gratings

Channel & Grating for firefighting lifts

Channel & Grating for fire-fighting lift – stainless steel grade 304, (min.) 1.5mm thickness channel. Designed to prevent water, such as from a sprinkler entering as lift well.



Bespoke options

The Wade team design bespoke drainage solutions everyday. Common bespoke work may include:

- Overall Dimensions
 - Grates
 - Fixings
- Extended flange
 - Curvature
- And much more

Contact the Wade team for more information:

wadesales@alumascwms.co.uk