



EditorialPilot + Editorial Manager®

Publishers aim to reduce editorial workload and maintain tight control on what enters peer review – yet tedious manual checks introduce costly delays, inconsistency, and potential post-publication corrections.

The seamless integration between Editorial Manager® (EM) and Integra's EditorialPilot offers publishers an automated, AI-powered manuscript screening solution that streamlines editorial decisions, promotes research integrity, and boosts content quality at scale.

100+ Automated Checks



Technical
Readiness



Language
Analysis



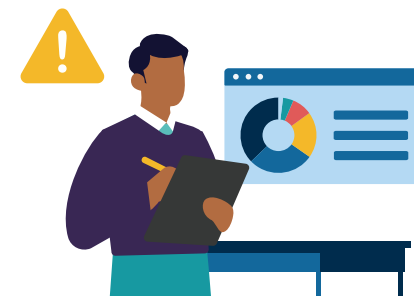
Research
Integrity



Submission
Verification

Cutting-Edge Checks

- ✓ Ensures technical compliance, identifies scope mismatch, and validates metadata consistency
- ✓ Detects Authorship inconsistencies, image manipulation, GenAI text, scientific rigor gaps, and more
- ✓ Offers non-intrusive language edits while preserving the Author's voice to support readability and cleaner content



Strengthens Editorial Judgement

- ✓ Screens articles early in the workflow with configurable checks aligned to journal requirements
- ✓ Empowers efficient, informed editorial decision-making with actionable, transparent insights
- ✓ Drives confidence by accelerating higher quality manuscripts to peer review and minimizing downstream risk

Optimized Workflow

- ✓ Reduces pressure on editorial teams by automatically analyzing manuscripts upon submission
- ✓ Generates a detailed report on each paper, seamlessly accessible within existing EM workflow
- ✓ Performs checks within minutes, reducing costly bottlenecks and supporting article screening at scale



To learn more, contact Integra at connect@integra.co.in



Aries Systems Corporation · 50 High Street, Suite 21, North Andover, MA 01845 USA
P +1 978.975.7570 · F +1 978.975.3811 · marketing@ariessys.com · www.ariessys.com

Aries Systems Corporation. Editorial Manager and Produxion Manager are trademarks and the property of Aries Systems Corporation. © 2026 Aries Systems Corporation.